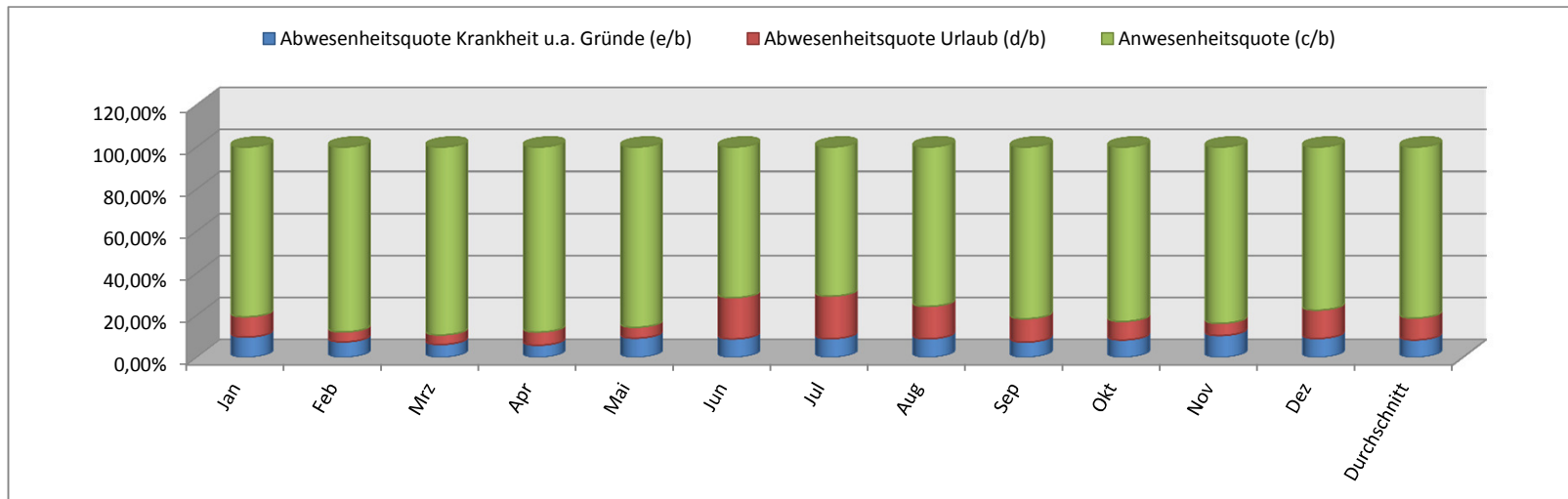


Jahr **2022**
Wobi **insgesamt**

Anwesenheits- und Abwesenheitsquote des WOBİ-Personals

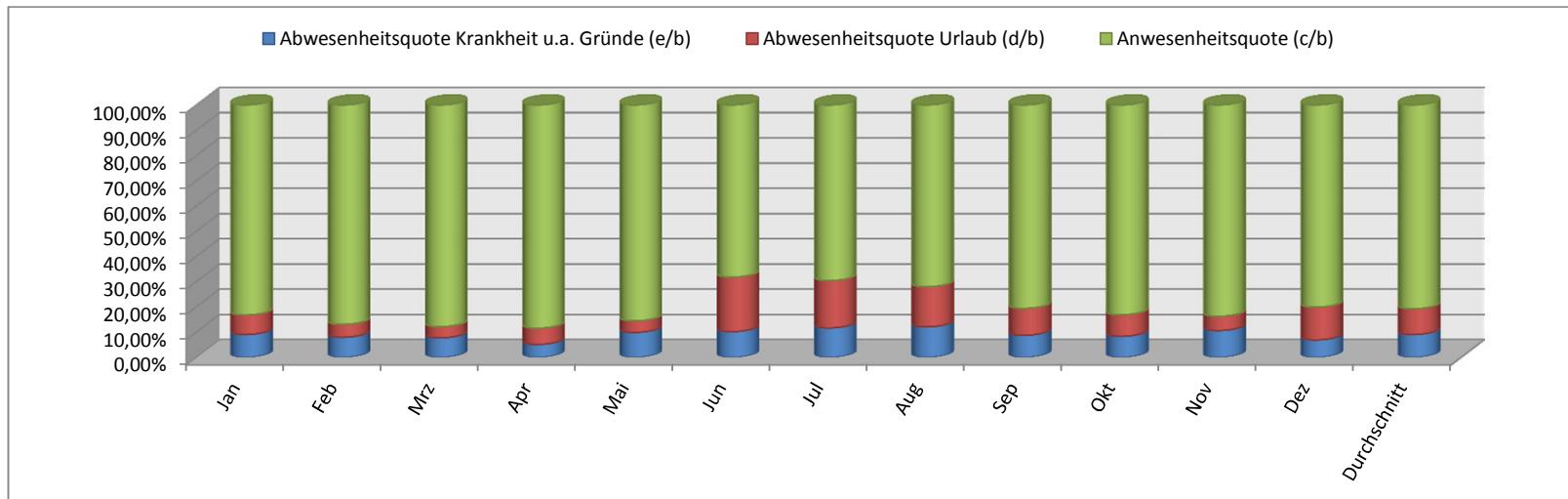
| Beschreibung | Jan | Feb | Mrz | Apr | Mai | Jun | Jul | Aug | Sep | Okt | Nov | Dez | Durchschnitt |
|---|--------|--------|--------|--------|--------|--------|--------|--------|--------|--------|--------|--------|--------------|
| a) Bedienstete mit unbefristetem Arbeitsvertrag | 197 | 198 | 195 | 193 | 193 | 192 | 189 | 188 | 187 | 183 | 184 | 181 | 190 |
| b) Arbeitstage | 4015 | 4364 | 5061 | 4296 | 4987 | 3615 | 3720 | 4140 | 4332 | 4242 | 4378 | 3841 | 4249 |
| c) Präsenztage | 3241 | 3837 | 4521 | 3780 | 4273 | 2589 | 2637 | 3137 | 3536 | 3516 | 3669 | 2977 | 3476 |
| d) Urlaubstage | 387 | 206 | 230 | 268 | 259 | 710 | 753 | 638 | 483 | 375 | 255 | 519 | 424 |
| e) Andere Abwesenheitsgründe in Tage | 387 | 321 | 310 | 248 | 455 | 316 | 330 | 365 | 313 | 351 | 454 | 345 | 350 |
| Abwesenheitsquote Krankheit u.a. Gründe (e/b) | 9,64% | 7,36% | 6,13% | 5,77% | 9,12% | 8,74% | 8,87% | 8,82% | 7,23% | 8,27% | 10,37% | 8,98% | 8,28% |
| Abwesenheitsquote Urlaub (d/b) | 9,64% | 4,72% | 4,54% | 6,24% | 5,19% | 19,64% | 20,24% | 15,41% | 11,15% | 8,84% | 5,82% | 13,51% | 10,41% |
| Anwesenheitsquote (c/b) | 80,72% | 87,92% | 89,33% | 87,99% | 85,68% | 71,62% | 70,89% | 75,77% | 81,63% | 82,89% | 83,81% | 77,51% | 81,31% |
| Bedienstete mit befristetem Arbeitsvertrag | 23 | 22 | 22 | 22 | 21 | 21 | 20 | 20 | 19 | 19 | 19 | 19 | 21 |



Jahr **2022**
 Wobi **Wohnung**

Anwesenheits- und Abwesenheitsquote des WOBİ-Personals

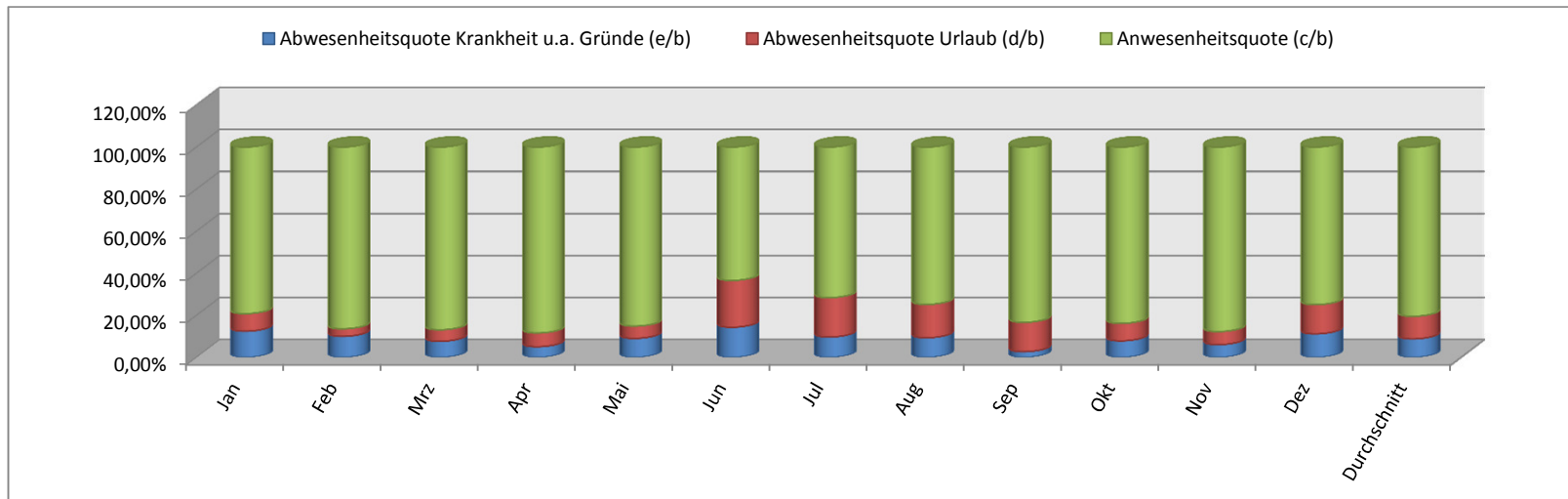
| Beschreibung | Jan | Feb | Mrz | Apr | Mai | Jun | Jul | Aug | Sep | Okt | Nov | Dez | Durchschnitt |
|---|--------|--------|--------|--------|--------|--------|--------|--------|--------|--------|--------|--------|--------------|
| a) Bedienstete mit unbefristetem Arbeitsvertrag | 67 | 68 | 67 | 66 | 66 | 65 | 64 | 63 | 64 | 62 | 62 | 60 | 65 |
| b) Arbeitstage | 1340 | 1391 | 1604 | 1383 | 1549 | 1088 | 1124 | 1219 | 1308 | 1321 | 1327 | 1187 | 1320 |
| c) Präsenztage | 1115 | 1209 | 1409 | 1223 | 1325 | 742 | 782 | 878 | 1054 | 1098 | 1111 | 951 | 1075 |
| d) Urlaubstage | 104 | 71 | 71 | 89 | 71 | 235 | 211 | 194 | 140 | 113 | 75 | 154 | 127 |
| e) Andere Abwesenheitsgründe in Tage | 121 | 111 | 124 | 71 | 153 | 111 | 131 | 147 | 114 | 110 | 141 | 82 | 118 |
| Abwesenheitsquote Krankheit u.a. Gründe (e/b) | 9,03% | 7,98% | 7,73% | 5,13% | 9,88% | 10,20% | 11,65% | 12,06% | 8,72% | 8,33% | 10,63% | 6,91% | 9,02% |
| Abwesenheitsquote Urlaub (d/b) | 7,76% | 5,10% | 4,43% | 6,44% | 4,58% | 21,60% | 18,77% | 15,91% | 10,70% | 8,55% | 5,65% | 12,97% | 10,21% |
| Anwesenheitsquote (c/b) | 83,21% | 86,92% | 87,84% | 88,43% | 85,54% | 68,20% | 69,57% | 72,03% | 80,58% | 83,12% | 83,72% | 80,12% | 80,77% |
| Bedienstete mit befristetem Arbeitsvertrag | 11 | 11 | 11 | 11 | 11 | 11 | 10 | 10 | 10 | 10 | 10 | 10 | 11 |



Jahr **2022**
 Wobi **Zentral**

Anwesenheits- und Abwesenheitsquote des WOBİ-Personals

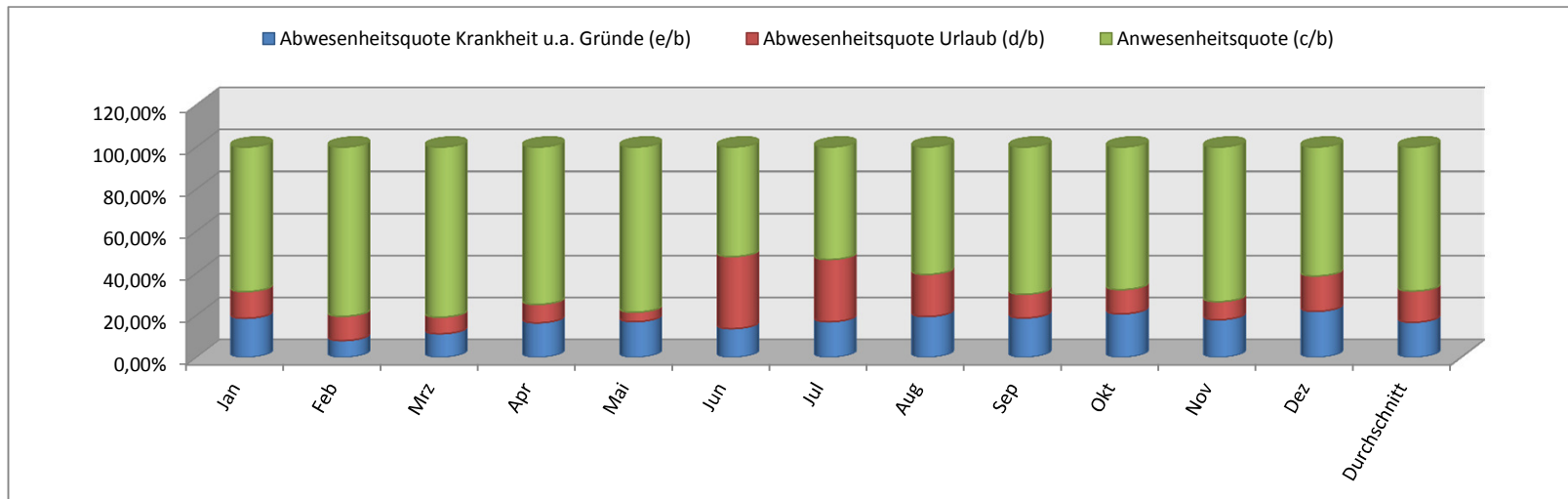
| Beschreibung | Jan | Feb | Mrz | Apr | Mai | Jun | Jul | Aug | Sep | Okt | Nov | Dez | Durchschnitt |
|---|--------|--------|--------|--------|--------|--------|--------|--------|--------|--------|--------|--------|--------------|
| a) Bedienstete mit unbefristetem Arbeitsvertrag | 35 | 35 | 34 | 33 | 33 | 33 | 32 | 32 | 32 | 30 | 31 | 31 | 33 |
| b) Arbeitstage | 611 | 670 | 784 | 673 | 808 | 552 | 630 | 675 | 739 | 687 | 741 | 626 | 683 |
| c) Präsenztage | 484 | 579 | 681 | 595 | 688 | 350 | 451 | 505 | 616 | 576 | 650 | 469 | 554 |
| d) Urlaubstage | 51 | 24 | 43 | 44 | 47 | 123 | 118 | 107 | 103 | 57 | 46 | 87 | 71 |
| e) Andere Abwesenheitsgründe in Tage | 76 | 67 | 60 | 34 | 73 | 79 | 61 | 63 | 20 | 54 | 45 | 70 | 59 |
| Abwesenheitsquote Krankheit u.a. Gründe (e/b) | 12,44% | 10,00% | 7,65% | 5,05% | 9,03% | 14,31% | 9,68% | 9,33% | 2,71% | 7,86% | 6,07% | 11,18% | 8,78% |
| Abwesenheitsquote Urlaub (d/b) | 8,35% | 3,58% | 5,48% | 6,54% | 5,82% | 22,28% | 18,73% | 15,85% | 13,94% | 8,30% | 6,21% | 13,90% | 10,75% |
| Anwesenheitsquote (c/b) | 79,21% | 86,42% | 86,86% | 88,41% | 85,15% | 63,41% | 71,59% | 74,81% | 83,36% | 83,84% | 87,72% | 74,92% | 80,48% |
| Bedienstete mit befristetem Arbeitsvertrag | 6 | 5 | 5 | 5 | 4 | 4 | 4 | 4 | 3 | 3 | 3 | 3 | 4 |



Jahr **2022**
 Wobi **Finanz**

Anwesenheits- und Abwesenheitsquote des WOBİ-Personals

| Beschreibung | Jan | Feb | Mrz | Apr | Mai | Jun | Jul | Aug | Sep | Okt | Nov | Dez | Durchschnitt |
|---|--------|--------|--------|--------|--------|--------|--------|--------|--------|--------|--------|--------|--------------|
| a) Bedienstete mit unbefristetem Arbeitsvertrag | 19 | 19 | 19 | 19 | 19 | 19 | 19 | 19 | 19 | 19 | 19 | 19 | 19 |
| b) Arbeitstage | 275 | 302 | 340 | 262 | 354 | 242 | 260 | 294 | 310 | 295 | 313 | 279 | 294 |
| c) Präsenztage | 189 | 243 | 275 | 196 | 278 | 126 | 139 | 178 | 217 | 200 | 230 | 171 | 204 |
| d) Urlaubstage | 35 | 35 | 27 | 23 | 16 | 83 | 77 | 59 | 35 | 34 | 27 | 47 | 42 |
| e) Andere Abwesenheitsgründe in Tage | 51 | 24 | 38 | 43 | 60 | 33 | 44 | 57 | 58 | 61 | 56 | 61 | 49 |
| Abwesenheitsquote Krankheit u.a. Gründe (e/b) | 18,55% | 7,95% | 11,18% | 16,41% | 16,95% | 13,64% | 16,92% | 19,39% | 18,71% | 20,68% | 17,89% | 21,86% | 16,68% |
| Abwesenheitsquote Urlaub (d/b) | 12,73% | 11,59% | 7,94% | 8,78% | 4,52% | 34,30% | 29,62% | 20,07% | 11,29% | 11,53% | 8,63% | 16,85% | 14,82% |
| Anwesenheitsquote (c/b) | 68,73% | 80,46% | 80,88% | 74,81% | 78,53% | 52,07% | 53,46% | 60,54% | 70,00% | 67,80% | 73,48% | 61,29% | 68,50% |
| Bedienstete mit befristetem Arbeitsvertrag | 1 | 1 | 1 | 1 | 1 | 1 | 1 | 1 | 1 | 1 | 1 | 1 | 1 |



Jahr **2022**
 Wobi **Technik**

Anwesenheits- und Abwesenheitsquote des WOBI-Personals

| Beschreibung | Jan | Feb | Mrz | Apr | Mai | Jun | Jul | Aug | Sep | Okt | Nov | Dez | Durchschnitt |
|---|--------|--------|--------|--------|--------|--------|--------|--------|--------|--------|--------|--------|--------------|
| a) Bedienstete mit unbefristetem Arbeitsvertrag | 76 | 76 | 75 | 75 | 75 | 75 | 74 | 74 | 72 | 72 | 72 | 71 | 74 |
| b) Arbeitstage | 1789 | 2001 | 2333 | 1978 | 2276 | 1733 | 1706 | 1952 | 1975 | 1939 | 1997 | 1749 | 1952 |
| c) Präsenztage | 1453 | 1806 | 2156 | 1766 | 1982 | 1371 | 1265 | 1576 | 1649 | 1642 | 1678 | 1386 | 1644 |
| d) Urlaubstage | 197 | 76 | 89 | 112 | 125 | 269 | 347 | 278 | 205 | 171 | 107 | 231 | 184 |
| e) Andere Abwesenheitsgründe in Tage | 139 | 119 | 88 | 100 | 169 | 93 | 94 | 98 | 121 | 126 | 212 | 132 | 124 |
| Abwesenheitsquote Krankheit u.a. Gründe (e/b) | 7,77% | 5,95% | 3,77% | 5,06% | 7,43% | 5,37% | 5,51% | 5,02% | 6,13% | 6,50% | 10,62% | 7,55% | 6,39% |
| Abwesenheitsquote Urlaub (d/b) | 11,01% | 3,80% | 3,81% | 5,66% | 5,49% | 15,52% | 20,34% | 14,24% | 10,38% | 8,82% | 5,36% | 13,21% | 9,80% |
| Anwesenheitsquote (c/b) | 81,22% | 90,25% | 92,41% | 89,28% | 87,08% | 79,11% | 74,15% | 80,74% | 83,49% | 84,68% | 84,03% | 79,25% | 83,81% |
| Bedienstete mit befristetem Arbeitsvertrag | 5 | 5 | 5 | 5 | 5 | 5 | 5 | 5 | 5 | 5 | 5 | 5 | 5 |

